

## PRODUCT OVERVIEW

With the increase in data proliferation and other factors, traffic volumes are growing rapidly. The type of traffic is also changing primarily due to the growth in virtualization, cloud computing, mobility and other factors.

Until recently, most data traffic flowed between users and the data center which hosted applications; this traffic runs in vertical patterns. Now, however, more and more traffic flows horizontally between servers, comprising intra-data center traffic and the traffic between servers in different data centers. In parallel to the increased traffic loads, end users demand faster and more reliable performance and are intolerant of any service downtime.

Enterprises cannot afford slow or unreliable service, especially in their mission-critical applications. To meet these demands for improved network performance while reducing expenses, HP's Virtual Connect portfolio (also known as Flex-10 or Flex-Fabric) can reduce complexity and costs at the server edge, where a significant portion of an enterprise's crucial data communication occurs. HP's Virtual Connect portfolio simplifies network configuration and delivers direct server to server

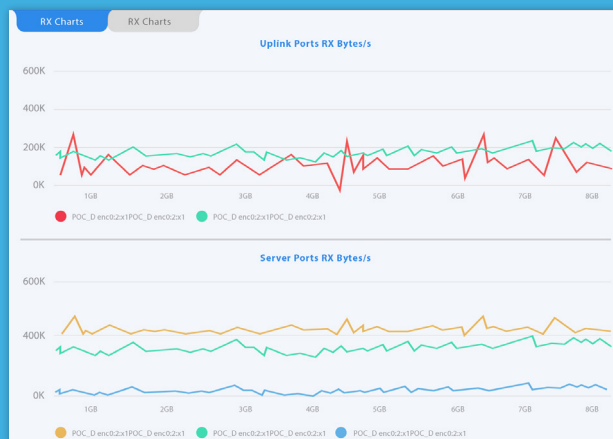
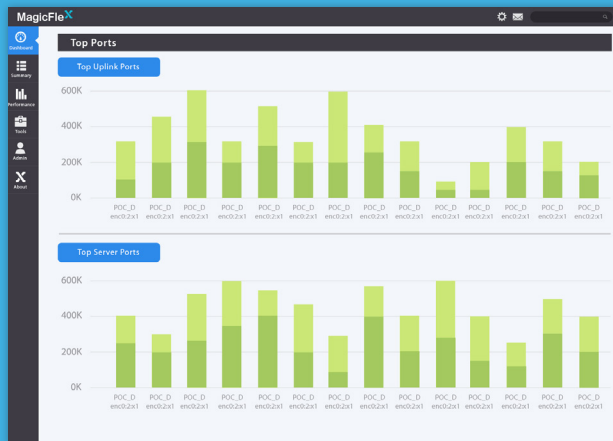
connectivity within the BladeSystem enclosure. To ensure that this crucial data is handled effectively, maintenance and troubleshooting should be as simple and efficient as possible.

MagicFlex, a virtual appliance, enhances the functionality of Virtual Connect by providing a unique solution that monitors the processes and port usage of the Virtual Connect environment. MagicFlex regularly polls Virtual Connect events to provide current domain and port status. Network administrators can adjust port configuration to enhance traffic efficiency. Full event history provides a comprehensive view of all domains and port statuses, allowing for adjustment in allocation of resources and potential savings in the reduction of costly ports and improved traffic flows. With continuous monitoring and customized alerts, proactive activities can prevent small issues from becoming major crises.

MagicFlex considers the sensitivity of enterprise data and ensures one-way encrypted traffic from Virtual Connect only. In addition, no information from MagicFlex is sent to external sources; alerts are only sent to defined recipients. MagicFlex has been installed in secure environments, including government ministries and law enforcement agencies.



# SOLUTION BENEFITS



Severity	Alert Source	Domain	Type	Name	Date	State	Alert text
Warning	Domain Configuration Analyzer	POC_D	Network	HPN-LAB484-2	2013 Sep 9 11:26 - 2013 Oct 27 18:00	Hide	Network has smart link disabled...
Warning	Domain Configuration Analyzer	POC_D	Network	HPN-LAB484-2	2013 Sep 9 11:26 - 2013 Oct 27 18:00	Hide	Network has smart link disabled...
Warning	Domain Configuration Analyzer	POC_D	Network	HPN-LAB484-2	2013 Sep 9 11:26 - 2013 Oct 27 18:00	Hide	Network has smart link disabled...
Warning	Domain Configuration Analyzer	POC_D	Network	HPN-LAB484-2	2013 Sep 9 11:26 - 2013 Oct 27 18:00	Hide	Network has smart link disabled...
Warning	Domain Configuration Analyzer	POC_D	Network	HPN-LAB484-2	2013 Sep 9 11:26 - 2013 Oct 27 18:00	Hide	Network has smart link disabled...
Error	Domain Configuration Analyzer	POC_D	Network	HPN-LAB484-2	2013 Sep 9 11:26 - 2013 Oct 27 18:00	Hide	Network has smart link disabled...
Error	Domain Configuration Analyzer	POC_D	Network	HPN-LAB484-2	2013 Sep 9 11:26 - 2013 Oct 27 18:00	Hide	Network has smart link disabled...
Error	Domain Configuration Analyzer	POC_D	Network	HPN-LAB484-2	2013 Sep 9 11:26 - 2013 Oct 27 18:00	Hide	Network has smart link disabled...

## FEATURES

- Investigates performance points of interest by identifying busiest server and uplink ports all over the Data Center.
- Provides a performance retrospective, from uplink ports through stacking links, drilling down to the Blade server ports, including CNA v-ports.
- Displays uplink, stacking link, server's ports and v-ports performance, both real-time and history.
- Analyses your configuration and propagates alerts to predefined users when problematic issues are noted.
- Examines the Virtual Connect and the VMware ESX servers configurations, checking compatibility to enhance smooth performance and limit issues resulting from misconfigurations and version incompatibility.
- Detects duplication in identifiers such as MAC and WWN addresses, and Serial Numbers.
- Provides configuration analysis of network redundancy, suboptimal configurations and other issues.
- Enterprise view of all domains' statuses; displays all Virtual Connect domains at a glance in a single screen.
- Simplifies display of Virtual Connect System Log including Filter and Search capabilities.
- System log is frequently retrieved; available offline even when the Virtual Connect environment is down or inaccessible.
- Backup and change management of Virtual Connect configuration.

**MagicFlex**  
Virtual Connect Analysis

More information about MagicFlex is available at: [www.magic-flex.com](http://www.magic-flex.com) | [www.linkedin.com/company/magicflex](http://www.linkedin.com/company/magicflex)  
Headquarters + 972 3 5257163 | UK +44 203 6085242 | US +1 408 7705965 | Email: [info@magic-flex.com](mailto:info@magic-flex.com)